



Key Features

- Stores all system commands and macros for reliable control.
- Integrated RF receiver.
- High-output infrared port.
- Power sensing input for monitoring equipment status.
- Works with all RTI wireless remotes.
- IR output port incorporates both short-circuit and overload protection.
- RF signal reception LED.
- Seamless programming using Integration Designer™ software.
- Field upgradable firmware.
- Non-volatile Flash memory stores your system configuration even when power is not present.
- USB Programming.
- Includes ECB-5 Connecting Block.

RP-1 Remote Control Processor

RTI's RP-1 is a low-cost programmable control system that is designed to automate the operation of audio/video and other electronic systems. It combines many of the capabilities of RTI's RP-6 Remote Control Processor with an integrated RF receiver – all in one small, cost-effective package. The RP-1 is the perfect control system for single room installations such as home theaters, media centers, and bedrooms.

Description

The RP-1 Remote Control Processor is a powerful central controller that is designed for seamless integration with RTI's family of universal remote controls. Unlike simple IR-to-RF converters, the RP-1 stores all system commands and macros where they should be – within a central processor. The RP-1 is a single box solution, receiving RF trigger codes from RTI remotes via the integrated receiver.

The RP-1 Remote Control Processor provides a truly reliable, cost-effective control processor in a small package. It can be combined with any RTI remote control to form a robust control system for almost any home A/V configuration. The RP-1 even comes equipped with a power sensing port to ensure that your system's operation is always reliable and predictable.

Call 952-253-3100

www.rticorp.com

Specifications

Power Supply.....	+12V DC, 500 mA
Number of Output Ports.....	One (1) High Power IR Port
IR Output Drive.....	200mA maximum
Infrared Transmission Bandwidth	15kHz - 460kHz
RF Receiver Carrier Frequency.....	433 MHz
Power Sense Input	Off = 0VDC - 2VDC; On = 3VDC - 20VDC
Mounting.....	Wall-mount or free standing
Dimensions (W x H x D)	5.5" (140mm) x 3.3" (84mm) x 1.4" (36mm)
.....	(width dimension does not include antenna or connectors)
Weight	7.0 oz. (198g)
Warranty	One Year (Parts & Labor)

All specifications subject to change without notice

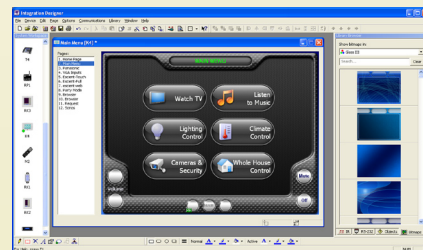


ECB-5 Connecting Block
included with kit



Other RTI Products

T1	Universal System Controller
M2	Universal System Controller
T2+	Universal System Controller
T2-Cs	Universal System Controller
T2-C	Universal System Controller
T3-V	Universal System Controller
T4	Universal System Controller
U1	Waterproof Controller
U2	Waterproof Controller
RKM-1	In-Wall Multi-Room Audio Keypad
RK1	In-Wall Keypad Controller
RK2	In-Wall Touchscreen Controller
RK3	In-Wall Touchscreen Controller
K4	In-Wall Touchscreen Controller
RP-6	Remote Control Processor
MRP-64	Multi-Room Control Processor
XP-8	Advanced Control Processor
RM-433	RF Receiver
RCM-12	Relay Control Module
ECB-5	IR Emitter Connecting Block
CM-232	RS-232 Communication Module
VPS-1	Voltage Power Sensor
SPS-1	Video Sync Power Sensor
IR-PRO	Infrared Capture System



Integration Designer™ Programming Software