

Features

Easy mounting on wall, ceiling and/or in soffit via integrated hanging brackets.

Smooth tensioning arm for fast and trouble free extending and retracting of projection screen fabric.

Screen fabric is taut because of large slat bar and strong spring mechanism.

Simple pull-out system locks at every 20 cm.

Black border increases perceived clarity of projected image.

Supplied complete with pull cord.

Options

- ▶ Screen fabrics Matte White S, Datalux S and High Power.
- ▶ Formats square (1:1), video (4:3) and HDTV (16:9).

Accessories

(see pages 16-17 and 72-73)

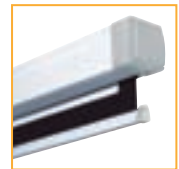
For mounting

- ▶ Ceiling brackets
10800002 length max. 100 cm
- ▶ Wall brackets.
10800001 length 75 cm
10800041 length 30 cm
- ▶ Bracket kit for easy mounting in soffit.
10800089

For operation

- ▶ If the projection screen is mounted at heights greater than 2.5 metres, a pull cord can be a handy aid in the rolling of a projection screen.
10800021 length 125cm

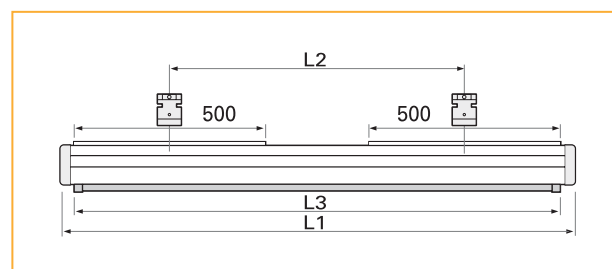
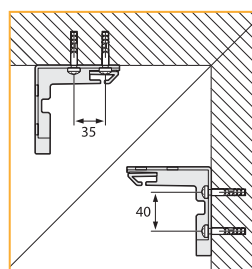
For more Easy Install detailed information, see pages 16-17.



▲ Professional projection screen with spring mechanism in various aspect ratios, sizes and screen fabrics.

Technical characteristics

- ▶ Projecta products satisfy the strictest quality and safety requirements in Europe and are CE approved.
- ▶ Projecta ensures that the quality of its products are monitored by the TÜV/GS programme.
- ▶ Steel case with galvanised interior and white powder coated exterior (RAL 9016).
- ▶ Matte White S: double-sided laminated vinyl on a woven fiberglass carrier with black backing; gain 1.0 and viewing angle 50° L/R.
- ▶ Datalux S: double-sided laminated vinyl on a woven fiberglass carrier with black backing; increased gain 1.5 and viewing angle 35° L/R.
- ▶ High Power : double-sided coated vinyl on a woven fiberglass carrier with black backing; high gain 2.8 and viewing angle 25° L/R.
- ▶ Projection screen fabrics satisfy the requirements for fire resistance of construction materials and components.
- ▶ Square format (1:1) has a 2.5-cm black border on left/right side.
- ▶ Video (4:3) and HDTV (16:9) formats have a 5-cm black border all around.



Aspect ratio	Screen size	Viewing size	Nominal diagonal	
	h x w cm	h x w cm	cm	inches
1:1	160x160	151x151		
	180x180	173x173		
	200x200	195x195		
	240x240	235x235		
4:3	138x180	126x168	213	84
	153x200	143x190	254	100
	183x240	173x230	305	120
	213x280	203x270	355	140
16:9	117x200	107x190	234	92
	139x240	129x230	269	106
	162x280	152x270	302	119

L1	Case L2 max.	L3	Net weight in kg	Screen fabrics		
				Matte White S prod.code	Datalux S prod.code	HighPower prod.code
1714	1534	1620	10	10200001	10200026	10200011
1914	1734	1820	12	10200002	10200027	10200013
2134	1954	2040	14	10200004	10200028	10200015
2534	2354	2440	17	10200006	10200033	
1914	1734	1820	11	10200016	10200030	10200018
2134	1954	2040	13	10200008	10200031	10200020
2534	2354	2440	16	10200009	10200032	10200022
2934	2754	2840	19	10200005	10200034	
2134	1954	2040	12	10200035	10200036	
2534	2354	2440	15	10200023	10200029	
2934	2754	2840	18	10200090	10200091	